



Hopf Management Console

**User's Manual
v 01.07**

Hopf Management Console

User's Manual v 01.07

© 2005 - 2009 RDCS Informationstechnologie GmbH

Embelgasse 66/10-11 • A – 1050 Wien

Phone +43-1-5455077-0 • Fax +43-1-5455077-11

E-Mail: support-hopf@rdcs.at • Web: <http://www.rdcs.at/>

Author: Sebastian Bohmann

Table of Contents

System Requirements.....	5
Installation on Windows 2000 / XP / Server 2003.....	6
Installation on Linux.....	7
Installation on Solaris (SPARC/x86/x64).....	7
Starting the Hopf Management Console.....	8
Windows 2000 / XP / Server 2003 / Vista.....	8
Linux / Solaris.....	8
After the Start.....	8
The Control Elements.....	9
Area A - The Menu.....	9
Submenu File.....	9
Sub Menu Devices.....	10
Sub Menu Tools.....	10
Sub Menu Help.....	10
Area B - The Tool Bar.....	11
Area C - The Device Tree.....	11
Area D - The Main Area.....	11
Area E - The Status Bar.....	11
Opening a Device.....	12
Configuring a Device.....	17
Transmit Value Changes.....	19
Read from Device.....	19
Undo All Changes.....	19
Load a Configuration File.....	19
Save the Current Configuration.....	19
Date, Time and Status.....	20
Changeover.....	20
Leap Second.....	20
Simulation.....	20
Setting Date and Time.....	21
Daylight Saving Changeover.....	21
Time Zone.....	22
Selecting a Time Zone.....	22
GPS Reception Quality.....	24
Update Interval.....	24
Reception Quality View.....	25
Reception Mode.....	25
DCF77 Reception Quality.....	26
Activation.....	26
Recording.....	27
Low Pass View.....	27
Clearing the Screen.....	27
Shown Time Interval.....	27
System Overview.....	28
Driver Management.....	29
Adding a Driver.....	29
The Network Configuration Assistant.....	30
NTP Analysis.....	31
NTP Real Time Monitoring.....	31
Add / Remove NTP Server.....	32
System Information.....	32
Kernel Information.....	33

- Peers..... 33
- Update Interval..... 34
- NTP Statistics Analysis..... 35
 - Overview..... 36
 - Loop Statistics..... 37
 - Peer Statistics..... 38
- GPS Recording..... 39
 - The recording dialog..... 39
 - List of recorded values..... 40
 - Other elements of the GPS reception dialog..... 40
- View GPS Record.....41

System Requirements

Supported Operating Systems

x86 CPUs:

Microsoft Windows 2000 / XP / Server 2003 / Vista

or

Debian Sarge, Fedora Core, RedHat Enterprise Linux, SuSE Linux, SuSE Enterprise Server, Solaris x86/x64

with X-Server.

Sun-Sparc CPUs:

Sun Solaris 8 and greater

Hardware Requirements

256 MB RAM

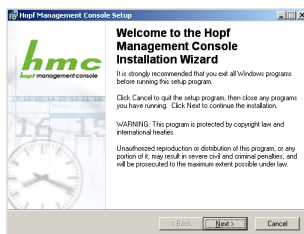
100MB Hard Disk Space, 200MB during installation process.

Screen resolution: at least 1024x768 pixels, 1280x1024 recommended

Installation on Windows 2000 / XP / Server 2003

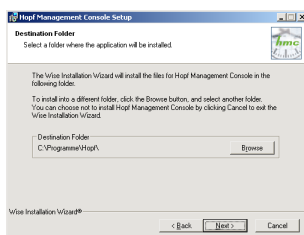
The installation routine is started via a double click on *HMC_v01.07_W32_install.exe*. A query for the installation routine's language will appear - select *English* and click *OK*.

The *installation wizard* has been started now. In the lower area there are three buttons: *Back*, *Forward*, *Cancel*. The *Back* button allows returning to previous steps at any time, in order to see or change the settings there. If the settings in a step of the installation seem to be in order, the button *Forward* will lead to the next step. The *Cancel* button allows leaving the *installation wizard* at any time, in which case no installation of the HMC will be performed on the computer.



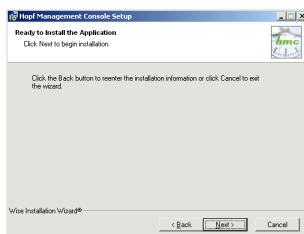
Step 1, The Welcome Screen

Information is shown, partly of a legal kind concerning the licence conditions for the Hopf Management Console. Activating the *Forward* button implies having read the information and accepting the licence conditions.



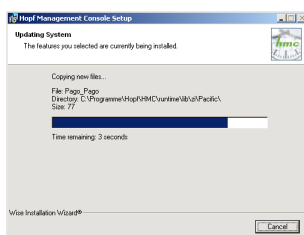
Step 2, Installation Directory Selection

Instead of the standard installation directory, on a English language Windows Installation this would be C:\Program Files\Hopf, it is possible to install the HMC into any other directory. This allows the parallel installation of different versions.



Step 3, Finalization

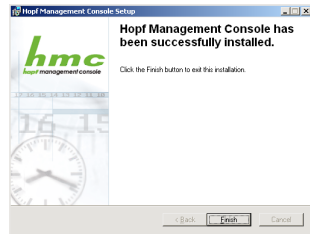
In this place, the user is informed that the next activation of the *Forward* button will start the HMC installation process, following the settings made in the previous steps. In case of concordance with these settings, the installation process is to be commenced by activating the *Forward* button.



Step 4, The Installation Process

A progress bar indicates how much of the installation process has been accomplished. It is necessary to wait until the installation process is finished.

Activating *Cancel* allows to cancel the process at any time. In this case, a complete installation of the HMC on the computer will not be performed.



Step 5, Confirmation

The user is informed that the hopf management console has been successfully installed. Activating *Finish* will close the installation wizard. The Hopf Management Console has now been prepared for use and may be started.

Installation on Linux

The RPM file *hmc-01.07-1.i386.rpm* has to be installed from the command line. In the directory where this RPM file is located the installation process will be initiated by the command:

```
rpm -i hmc-01.07-1.i386.rpm
```

The HMC will be installed automatically into the directory */opt/hopf/hmc*. No further steps are necessary for installation. After finalization of the automatic installation process, the Hopf Management Console is prepared for use and may be started.

Installation on Solaris (SPARC/x86/x64)

From the command line, unpack the file *hmc-01.07-solaris.sparc.tar.gz* / *hmc-01.07-solaris.x86.tar.gz*. Then, the installation may be commenced from the same directory by the command:

```
pkgadd -d ./
```

After choosing *Hopf Management Console 01.07*, the HMC will be installed automatically into the directory */opt/hopf/hmc*. No further steps are necessary for installation. After finalization of the automatic installation process, the Hopf Management Console is prepared for use and may be started.

Starting the Hopf Management Console

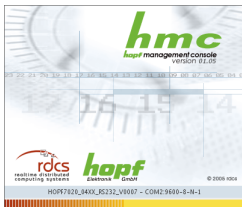
Windows 2000 / XP / Server 2003 / Vista

In the windows Start Menu, under *Programs* and in the directory *Hopf*, there is an entry *Hopf Management Console*. A simple click on this entry will start the Hopf Management Console.

Linux / Solaris

In the HMC's installation directory, there is an executable shell script, named *hmc.sh*. This script is used to start the HMC. It is necessary for an X server to be present and the DISPLAY environment variable to be set correctly.

After the Start



Before the HMC's main window pops up, a splash screen is shown. It contains a visualization of the HMC's start-up progress.

The Control Elements

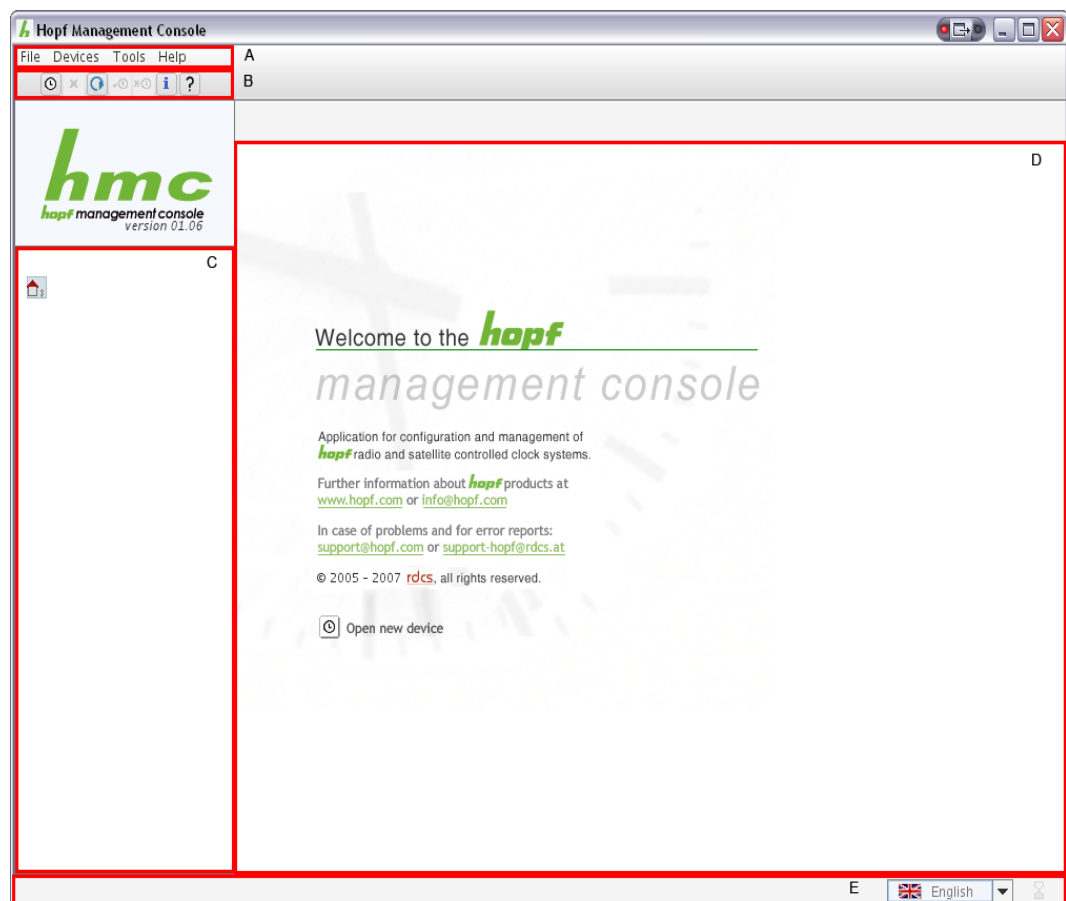
A - Menu: Access to all main features

B - Tool Bar: Fast access to device management and help

C - Device Tree: All integrated devices are visualized here

D - Main Area: The welcome screen and the configuration area of connected devices are shown here.

E - Status Bar: Status information is shown here, to the right there are the language selection and busy indicator.



Area A - The Menu

Submenu File

Exit: Closes the Hopf Management Console. In case there are changes not yet

transmitted, or devices in a special state, a confirmation dialog is shown before closing.

Sub Menu Devices

New: Integrate a new device. See *Opening a device*.

Remove: Removes the selected device from the device tree. In case there are changes not yet transmitted, or devices in a special state, a confirmation dialog is shown before removal.

Restore Connections: Restore all devices which have been connected after the last program termination. After program start no device is connected automatically.

Connect: Connect to the unconnected device selected in the device tree.

Disconnect: Close the connection to the connected device selected in the device tree. In case there are changes not yet transmitted, or devices in a special state, a confirmation dialog is shown before disconnecting.

Driver Management: Opens the driver management dialog, which shows details about installed drivers and allows the addition of new drivers. See *Driver Management*.

Sub Menu Tools

View DCF77 Record: allows opening a DCF77 reception data record file from the file system.

Network configuration assistant: opens the *Network Configuration Assistant*. See *Network Configuration Assistant*.








NTP Analysis: opens the *NTP Analysis* dialog. See *NTP Analysis*.

View GPS Record: opens the *GPS Record* dialog. See *GPS Recording*.

Sub Menu Help



Info: Opens the Info Dialog, which shows the HMC's version number, as well as contact information.

Area B - The Tool Bar

	Integrate a new device	Like <i>New</i> in Menu <i>Devices</i>
	Remove a device from the tree	Like <i>Remove</i> in Menu <i>Devices</i>
	Reconnect devices	Like <i>Reconnect Devices</i> in Menu <i>Devices</i>
	Connect to a device	Like <i>Connect</i> in Menu <i>Devices</i>
	Disconnect a device	Like <i>Disconnect</i> in Menu <i>Devices</i>
	Show the info dialog	Like <i>Info</i> in Menu <i>Devices</i>
	Show symbol explanations	

Area C - The Device Tree

In the device tree, all devices are shown which are integrated in the HMC. These may be in connected or disconnected state. This difference is indicated through different Icons and font weights.

	4465, COM2	Representation of a connected device
	7020, COM3	Representation of a disconnected device

All devices are visualized as sub elements of a main element representing the overview panel and serving as a collective indicator showing the presence of not yet transmitted changes, erroneous input and error statuses for connected devices.

Area D - The Main Area

In the main area, depending on the element selected in the device tree, either the welcome panel, system overview or the selected device's configuration view is shown. See *Configuring a Device*.


Area E - The Status Bar

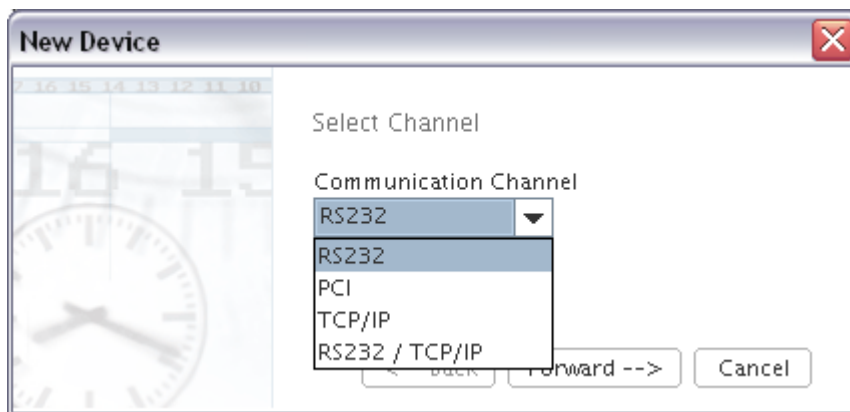
At the left side of the status bar, warnings, error and activity messages are shown. At the right side there is a language selector and a busy indicator showing that communication with a device is taking place. Background communication like error status requests or communication only suited to keep alive connections, is not indicated here.

When another than the active language is selected in the language selector, all shown texts are exchanged to texts in the newly selected language. If a text is not available in the selected language, the generally available English version of the text is shown.

In case there are changes not yet transmitted, or devices in a special state, a confirmation dialog is shown before the language switch is performed.

Opening a Device

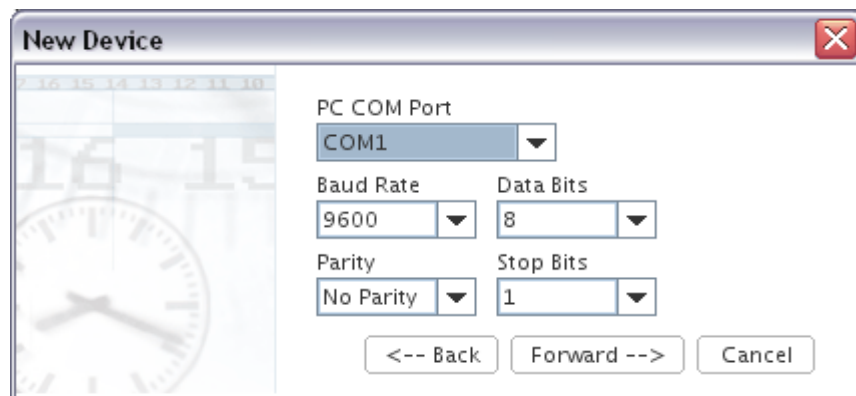
The menu item *Devices / New* and the Button  in the tool bar both open the *New Device* wizard:



First, the Communication Channel to the device to be opened has to be defined. This will be either a serial connection (*RS232*), or a connection to a device that is directly integrated with the computer, e.g. a PCI board (*PCI*), or a device connected via the Internet or a local network (*TCP/IP* or *RS232 / TCP/IP*).

Forward confirms the selection. If *PCI* was selected, the following steps are skipped and the *driver selection* (see below) will follow immediately. If *RS232*, *TCP/IP* or *RS232 / TCP/IP* was selected, thus a device connected with the computer via a serial port or network, in the next step the connection parameters will be set.

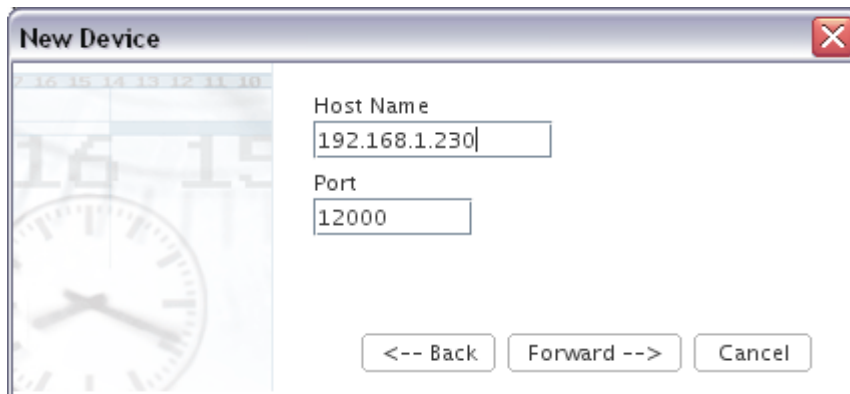
The difference between the Communication Channels *TCP/IP* and *RS232 / TCP/IP* is the driver used for communication with the device. Both channels are using *TCP/IP* as transport protocol. Please consult the device documentation if you are not sure which protocol has to be chosen for your device.



In the case of a device to be connected via the serial port, the computer's serial port used for the connection is selected, in this example the serial port COM1 on Microsoft Windows. The serial port ids may differ, depending on the operating system in use (e.g. `/dev/ttyS0` for Linux, `/dev/cua/a` for Solaris platforms).

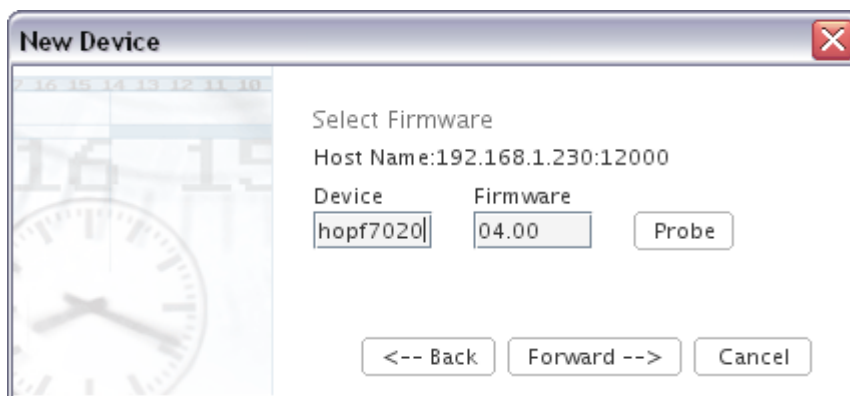
The **hopf** devices' serial ports, on the other hand, always have names like COM1, just like the computer's serial ports on Microsoft Windows. In the dialog shown in the screenshot, the serial port's name will never signify the device's serial port, but always the name of the computer's serial port that is to be used for configuring the device.

Additionally, the four parameters *baud rate*, *data bits*, *parity* and *stop bits* may be set. All **hopf** devices' default settings are 9600-8-N-1, like shown in the screenshot. Some devices allow changing these parameters for the configuration port in their configuration. In this case, it is necessary to change the settings here accordingly, else no communication at all will be possible. In case the parameters set in the device differ from the default in an unknown manner, a hardware reset of the device to be configured must be performed. This procedure is described in more detail in the device's documentation.



The 'New Device' dialog box features a decorative background on the left with a clock face and a calendar strip showing dates 10 through 16. The main area contains two text input fields: 'Host Name' with the value '192.168.1.230' and 'Port' with the value '12000'. At the bottom, there are three buttons: '<-- Back', 'Forward -->', and 'Cancel'.

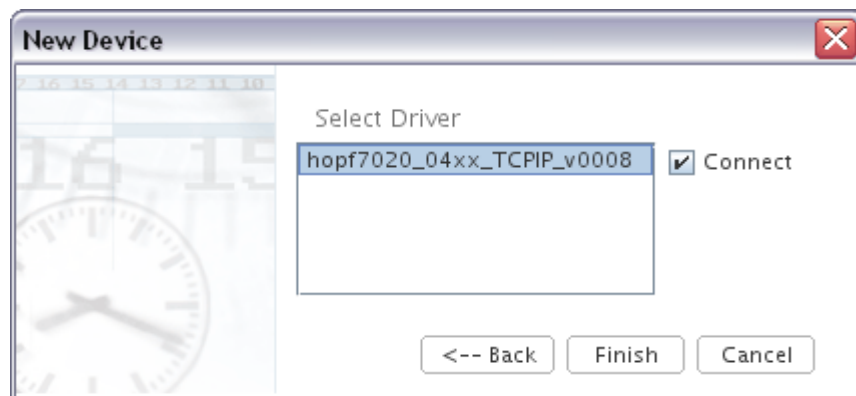
In the case of a TCP/IP or RS232 / TCP/IP connection, IP address and remote port have to be set. The port has to be the same as configured on the device (can be done via Web configuration).



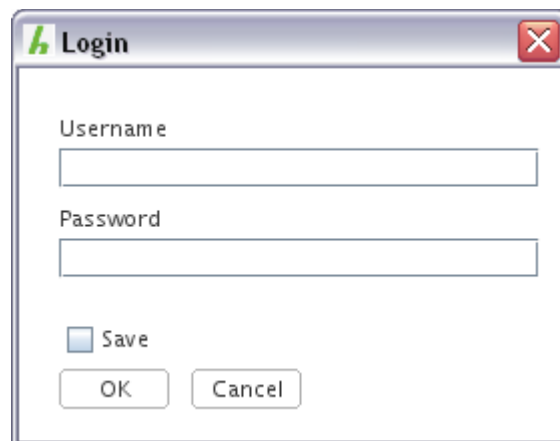
The 'New Device' dialog box shows the 'Select Firmware' step. It displays 'Host Name: 192.168.1.230:12000'. Below this is a table with two columns: 'Device' and 'Firmware'. The 'Device' field contains 'hopf7020' and the 'Firmware' field contains '04.00'. A 'Probe' button is located to the right of the 'Firmware' field. At the bottom, there are three buttons: '<-- Back', 'Forward -->', and 'Cancel'.

The next step, necessary for devices connected via RS232 or TCP/IP, is defining the device's type name and firmware version. All **hopf** devices allow an automated probing of these properties. To initiate such a probe, the button *Probe* has to be activated. For this to succeed, the device itself has to be connected to the previously configured serial port of the computer.

It is just as well possible to enter the properties manually. Like everywhere in the HMC, the input controls' background colour indicates an invalid input. For *device*, the type name has to be entered in the form *hopf4465* or *4465*. For *firmware*, the device's firmware version has to be entered in the form *04.07*. The device's major number is followed by a dot and the device's minor number. This applies to the conventions that is followed in the devices' documentation.

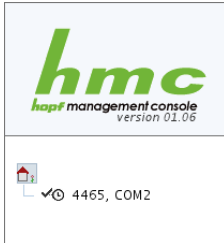


The next step, necessary for all kinds of devices, is the selection of the exact driver to be used. Only installed drivers that are compatible with the device are available for selection. This step is necessary to integrate a PCI board device that cannot be probed, like the **hopf 6039**. Additionally, it allows selecting drivers for special firmware versions that have been delivered by **hopf**.




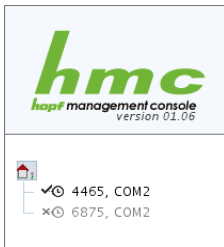
For devices connected via TCP/IP, usually login credentials are needed. If they are not yet stored or not valid anymore, a dialog is displayed which allows input of username and password. In case of a **hopf 7050RC** network management card either the users *master* or *device* are allowed. The password matches the password configured via the Web-Interface or the *Network Management Assistant*.

By choosing *OK*, the device will be configured and connected immediately. In the device tree, to the left in the HMC, the result will look like this for a **hopf** 4465:



The device is logically presented as a sub-element of the *system overview node*. In this case, the device has no sub elements of its own. Yet this is possible, as can be seen in case of the **hopf** 7001RC. The device's id and port name are presented dark grey and bold. This, like the icon ✓, means that the device is connected. In the device's context menu, to be activated by right-clicking the device in the tree, as well as in the menu *Devices*, there is a menu item *Disconnect*.

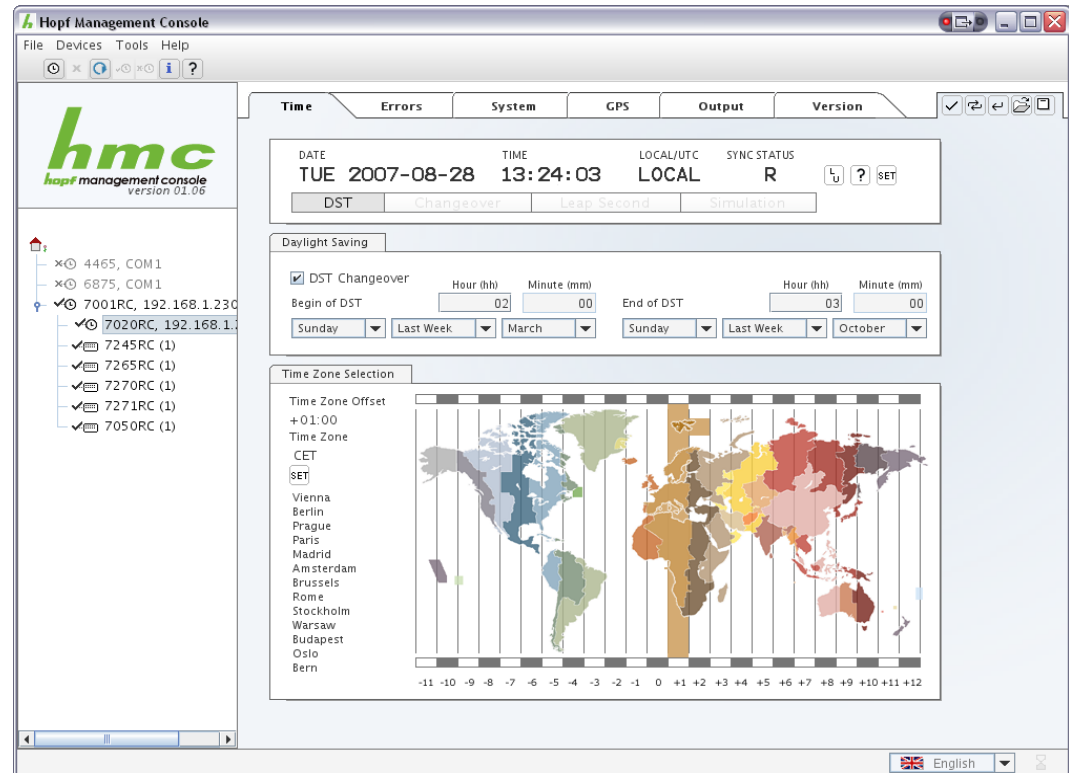
Via this menu item or the button  in the tool bar, the connection to the device may be closed without removing it from the tree.



It is possible to hold in the tree several disconnected devices that are all configured for the same serial port of the computer (as shown in this example a **hopf** 4465 and a **hopf** 6875 on port COM2). But of course, only one connected device is possible for a given port at a time. All devices in the device tree will sustain after restarting the HMC. Previously connected devices will be not be automatically reconnected.

Configuring a Device

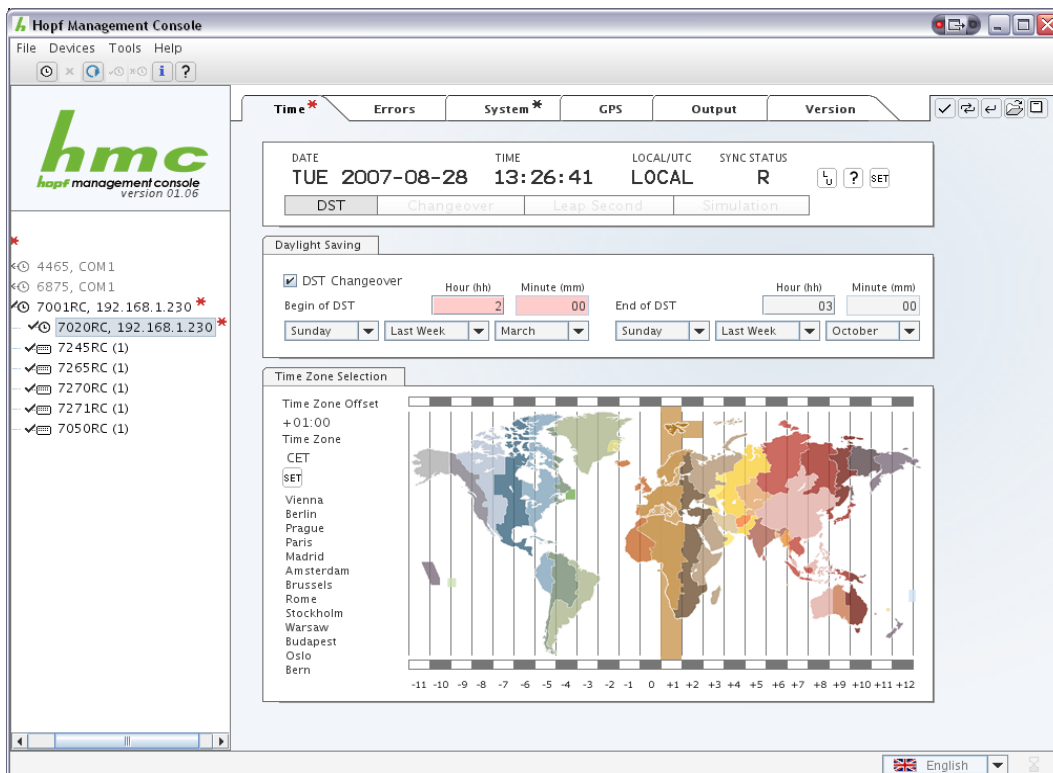
When a connected device is selected in the device tree, the HMC's main area will show that device's configuration view.



On top and to the right in the configuration view, there is a small tool bar for reading and setting device properties, as well as for loading and saving complete configurations.

- ☒ Transmit changes to the device.
- ☐ Read all configuration properties from the device. Changes not yet transmitted may be lost.
- ☐ Undo all recent changes without re-reading from the device.
- ☐ Load a complete configuration from a file.
- ☐ Save the current configuration to a file.

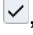
In case changes have been made within a tab's area, e.g. *Time and Date*, and not yet transmitted to the device, a black asterisk * in the tab and in the device tree will signify this fact. In case of an invalid input, a red asterisk * will be shown instead. If one tab holds a black asterisk and another tab a red one, the red kind will be shown in the device tree. Inside the area of a tab holding a red asterisk, at least one input control should signify an invalid input through its background colour. Transmitting values to a device is not possible whenever an invalid input is present.



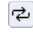
An example of an invalid input in the tab area *Time*. The *System* tab holds a black asterisk, indicating a value change. The device tree only shows a red asterisk which implies a value change anyway.

In this example the invalid input state is caused by the fact that the daylight saving change hour has not, as demanded and as indicated by the input control's label (*hh*), been entered as two digits. The input controls group's background colour shows that either a non-interpretable input, or an input that either doesn't fit in a certain value range or contradicts other inputs, has been made in this place.


Transmit Value Changes

Pushing the button , *transmit changes to device*, all present configuration value changes that have not yet been successfully transmitted to the device, will be transmitted immediately. This will not happen if there are any invalid inputs in any of the device's tabs. In that case, the effort will result in an error dialog. Transmission will always affect all changes in all tabs.


Read from Device

The button , *read all values from device*, causes a complete re-read of all values from the device, losing all eventually present changes that have not yet been transmitted.


Undo All Changes

The button , *undo all changes*, will discard all eventually present changes that have not yet been transmitted without reading the new state from the device.

Load a Configuration File

The button , *load a configuration file*, starts a file-open-dialog for choosing a configuration file. This file must have been saved using the exact same driver, else loading the configuration will result in an error dialog.

Save the Current Configuration

The button , *save the current configuration*, starts a file-save-dialog for defining a target file to which the current configuration will be saved for later loading into the same or another device using the exact same driver.

Date, Time and Status

All **hopf** clocks hold a control element in their tab *Time and Date*, showing the device's inner state.

DATE	TIME	LOCAL/UTC	SYNC STATUS			
TUE 2007-08-28	13:26:41	LOCAL	R			
<div> <div>DST</div> <div>Changeover</div> <div>Leap Second</div> <div>Simulation</div> </div>						

In this case, a time and date local to the selected time zone (see below) is shown. Automatic daylight saving time changeover is active, thus the clock, at the given date in august, is in daylight saving time mode. This fact is shown below the date / time view. The other possible state indicators are:

Changeover

At the end of the running hour, a changeover either from standard time to daylight saving time, or vice versa, will be performed.

Leap Second

At the end of the running hour, a leap second will be inserted. The way that this is performed strongly depends on the device's type and configuration. The device's documentation contains more detailed information about the clock's leap second behaviour.

Simulation

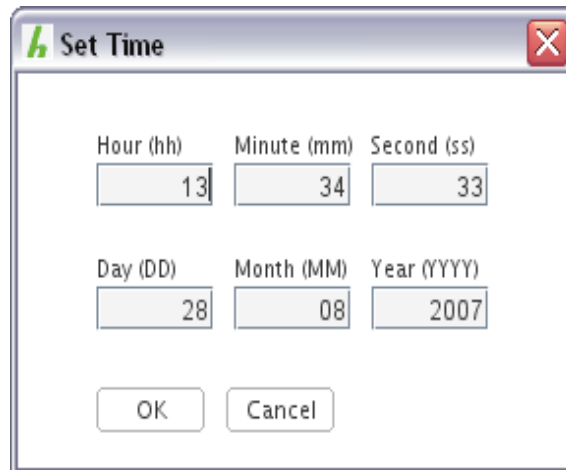
Some devices, like the **hopf** 7020RC, support a *simulation mode*. In this mode, the device will behave as though it was receiving a valid time signal, but output a manually set time.

To the right of the indicator showing that the clock view is at the moment showing the local time, there are three buttons:

- Switch the clock view between local time and UTC (Universal Time Coordinated)
- Quick Help: Explanation of reception quality codes
- Set Date / Time

Setting Date and Time

The button set *date / time* opens the *set time dialog*.



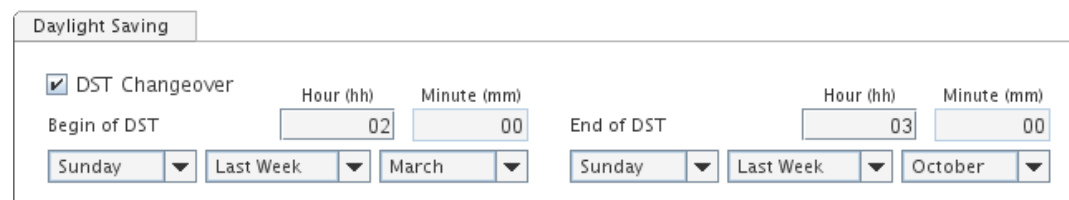
The 'Set Time' dialog box is a standard Windows-style window with a title bar containing a green icon and the text 'Set Time'. It features a close button (red X) in the top right corner. The dialog contains two rows of input fields. The first row is for time: 'Hour (hh)' with value '13', 'Minute (mm)' with value '34', and 'Second (ss)' with value '33'. The second row is for date: 'Day (DD)' with value '28', 'Month (MM)' with value '08', and 'Year (YYYY)' with value '2007'. At the bottom, there are 'OK' and 'Cancel' buttons.

This dialog is initialized with the computer's current time. All values are changeable. In case of invalid input, the input controls will change background colour, like everywhere else in the HMC, but no asterisk of any kind will be shown in the dialog or elsewhere. Yet, setting the time with invalid input is not possible.

After activating OK, the time will be sent to the clock *immediately*. It is not a configuration value to be transmitted later separately. This is necessary because the point of time of setting time in a device is decisive. A delayed transmission, just like saving to a file as a configuration value and part of a complete configuration, would not make sense.

Daylight Saving Changeover

All **hopf** clocks hold a control element in the *date and time* tab that is responsible for configuring the automatic daylight saving time changeover.



The 'Daylight Saving' configuration panel has a title bar with the text 'Daylight Saving'. It contains a checked checkbox labeled 'DST Changeover'. Below this, there are two sets of controls. The first set, labeled 'Begin of DST', includes a 'Hour (hh)' field with '02' and a 'Minute (mm)' field with '00'. Below these are three dropdown menus: 'Sunday', 'Last Week', and 'March'. The second set, labeled 'End of DST', includes a 'Hour (hh)' field with '03' and a 'Minute (mm)' field with '00'. Below these are three dropdown menus: 'Sunday', 'Last Week', and 'October'.

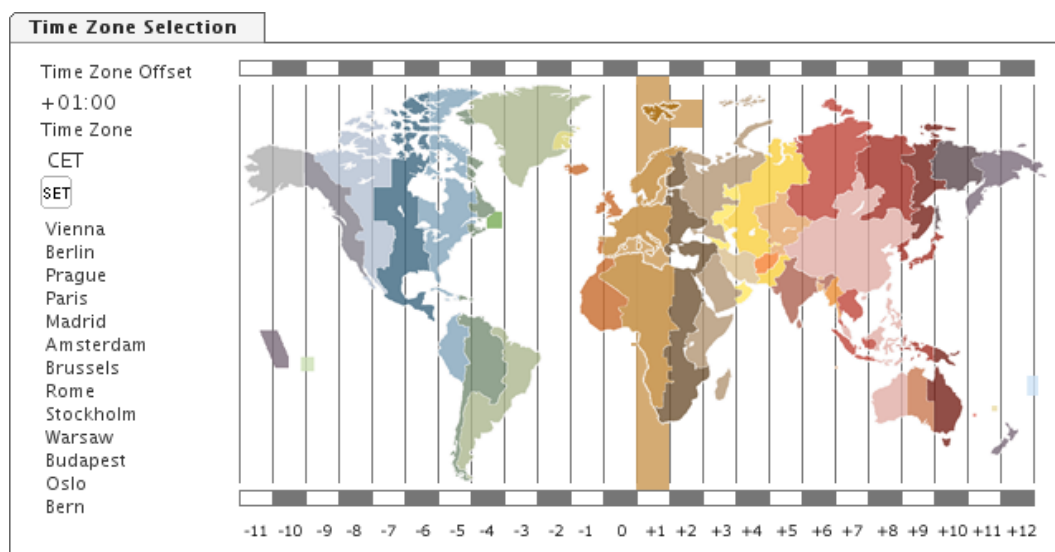
If the check box *DST Changeover* is active, automatic changeover from standard to daylight saving time, or vice versa, will be performed at the specified time points. To the left, labelled *Begin of DST*, the point of time is set for DST activation. To the right, label *End of DST*, the point of time for deactivation.

First Week, combined with e.g. *Sunday*, means that the first *Sunday* of the month will be the day of changeover. The same applies for *Second*, *Third*, *Fourth Week*. The setting *Last Week*, on the other hand, would either mean the fourth or the fifth Sunday of the month given, depending on whether that month had four or five Sundays, but in any case, the *last Sunday*.

Setting the changeover minute is deactivated in some devices, as only an automatic changeover at the full hour is supported by the device.

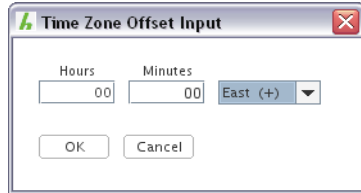
Time Zone


In the *Date and Time* tab, all **hopf** clocks hold a control element responsible for setting and visualizing the time zone that defines the clock's local time, relative to UTC. This setting only defines the offset of the local *normal time* that in practice is identical to standard time. An additional offset of an hour is added in case of daylight saving time. Thus there are no direct dependencies between daylight saving changeover and time zone settings.



Selecting a Time Zone

There are two ways to select a time zone: Either one of the predefined time zones is selected by mouse in the world map, which implies the limitation that not every theoretically possible time zone is available here, but only such time zones that were in practical use at the time of programming. A list of cities within the time zone that is marked in the card aids in finding the correct time zone for a certain place on earth. Of course, no warranty of any kind is given for the correctness of these lists and other information, and local time zones are always due to change. Map and lists are merely for convenience.



A time zone can be specified manually too (up to minute precision). For this purpose, the button  will open a dialog allowing to input an offset in direction, hours and minutes.

Caution! Not every device will support minute precision time zones. The device's documentation contains more detailed information about its exact time zone granularity.

GPS Reception Quality

All **hopf** clocks equipped with a GPS receiver are showing a tab containing a view on the current quality of GPS satellite signal reception.

Satellites

Visible: 9 Tracked: 3 Update Interval: 2 Seconds Refresh

Sat.No.	S/N Ratio		
	BAD	_SUFFICIENT_	_GOOD_
17	[Red Bar]	[Orange Bar] 80	
24	[Red Bar]	[Orange Bar] 88	
23	[Red Bar]	[Orange Bar]	[Green Bar] 144
	BAD	_SUFFICIENT_	_GOOD_

Reception Quality / Satellites

Reception Mode

☐ 3D

☒ Position Fixed

Reception Position

Position

DEGREES	MINUTES	SECONDS / 1000	DIRECTION
16	20	55747	East ▼
48	11	15351	North ▼

Refresh

Reception Quality View

The table below shows IDs and signal / noise ratios for a number of tracked satellites. The ID is shown at the most left, and a bar, augmented by a numeric label at its end, signifies the satellites reception quality in the sense of its received signal's signal / noise ratio.

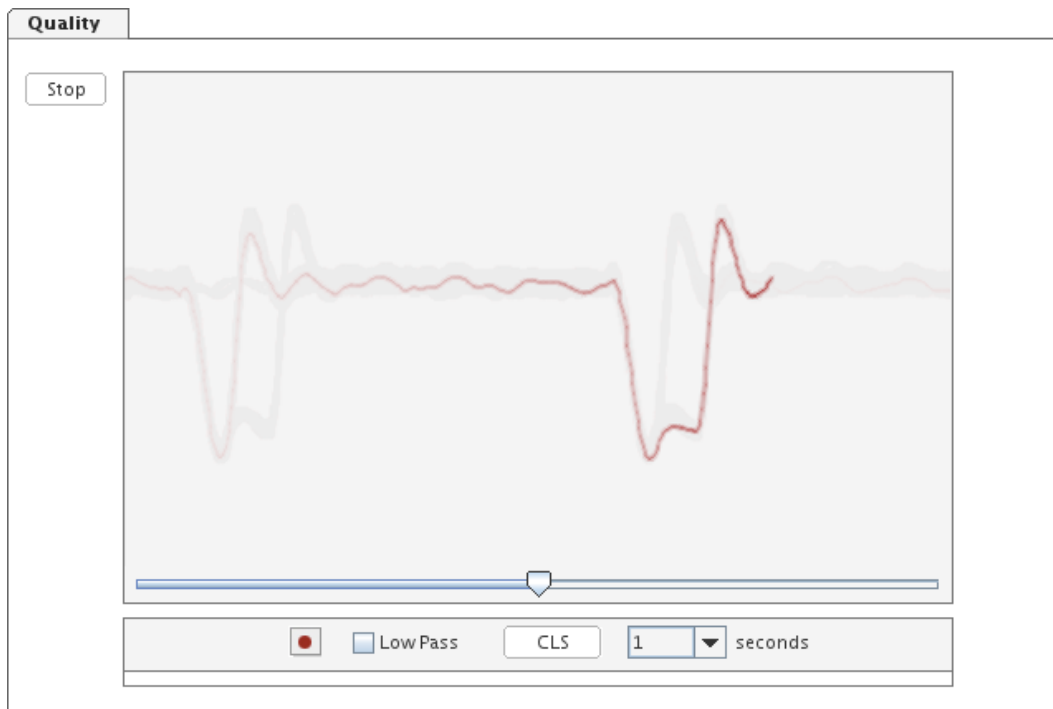
Reception Mode

Reception Mode means one of two distinct modes of operation. Mode *3D*, default and recommended, has the system evaluate its own position for calculating correcting terms for received time information, distorted by the signal run length from satellite to surface. Mode *Position Fixed*, on the other hand, demands a more or less exact definition of latitude and longitude from the user. The better this position matches the real position, the more exactly the correction terms may be evaluated, thus the more exactly the clock will work.

The only real disadvantage of the default Mode *3D* is that for time synchronization, the device needs a satellite reception situation suitable for evaluating its exact location. Unlike for pure time measurement with a given position, a number of just one or two concurrently visible satellites will in all cases not be sufficient.

DCF77 Reception Quality

All **hopf** clocks equipped with a DCF77 Receiver contain a tab containing a view for the direct visualization of the time signal that is modulated on the DCF77 radio wave.



This signal, generated and emitted via radio in Braunschweig, Germany, transmits bits of information encoded as shorter and longer (typically 100ms and 200ms) signal level drops. The falling flank of these level drops signifies the exact second change. The Image shows more or less the ideal case of such a signal that is realized by connecting the DCF77 input to the DCF77 simulation output of another device, instead of to an antenna.


The more the signal differs from the shape shown in the image, especially in the sense that clear falling flanks at second change are not visible any more, the worse the DCF signal reception is likely to be. These flanks, and the clearly visible drops in general, are to be sought during manually adjusting the antenna.

Activation

For the DCF77 view to display anything at all, it has to be activated through the button *Start*, to the left of the control's screen area. This button will switch the whole device to a mode that allows no configuration at all, including error state requests, and will use the device's configuration port exclusively for transmitting DCF77 signal data, thus being able to guarantee a real time data transmission.

After switching to DCF77 signal mode, a certain time will pass, device dependently, before the signal becomes visible. In addition, the device will have to adapt to the signal, which will take a few seconds up to a minute, before an easily visible signal is shown that allows judgement of the reception quality. If the signal seems to collapse and the device starts the adaptation cycle again, this does not indicate a defect of the device but is based on the interaction of the device's firmware and the DCF77 reception logic.

Recording

In the lower area there is a record button  that will switch the DCF77 view to record mode, that will try to record a complete signal cycle from the left to the right border of the screen area. After successful completion of a record a file-save-dialog will pop up allowing to select a target file for saving the recorded DCF77 signal data. This mainly serves the purpose of error detection through people who are not personally present. The HMC allows to open such a record file for viewing. This achieved through the menu item *Tools / View DCF77 Record*.

Low Pass View

The check box *Low Pass* allows additionally viewing a modified signal, filtered through a low pass and visualized as a thin blue line laid over the raw signal. Under certain conditions, this makes it possible to still see a signal that is hardly recognizable in the raw signal view due to high frequency noise.

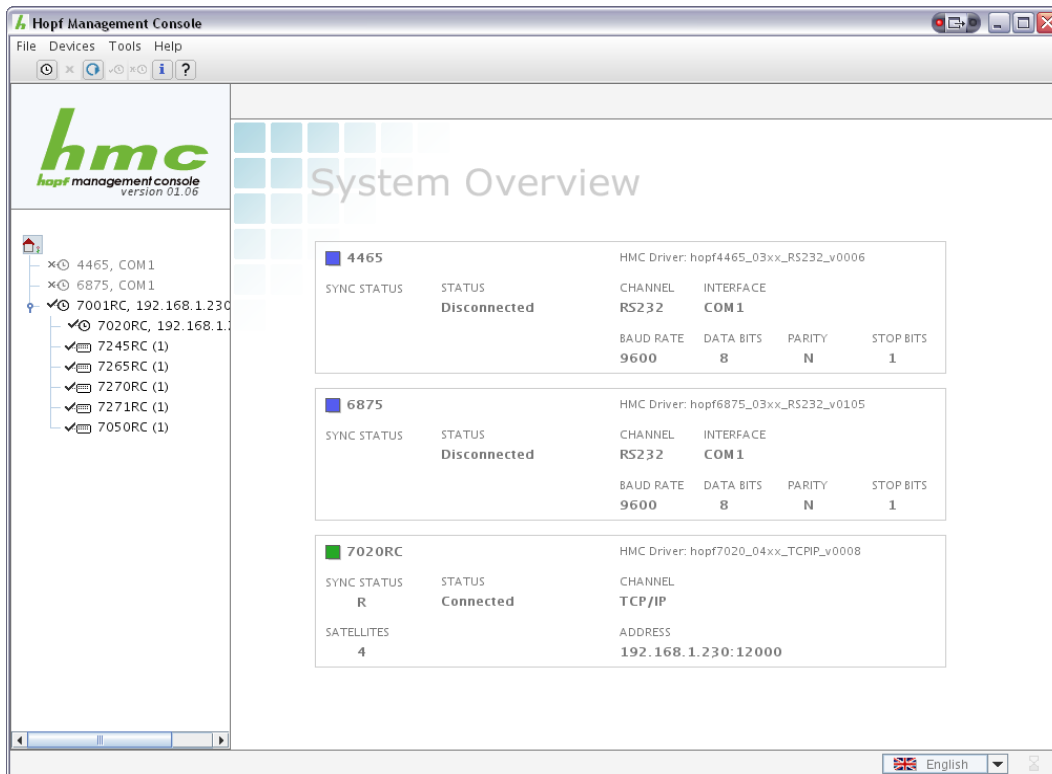
Clearing the Screen

The button *CLS* erases the complete screen view, so the always remaining shadows of past signal cycles are deleted. These serve viewing the temporal development of the DCF77 signal. Deleting them is especially helpful immediately after the device's adaptation process.

Shown Time Interval

to the right of the *CLS* button there is a control element for setting the time interval in seconds that is represented by the width of the DCF77 signal screen view.

System Overview



The system overview panel is reached by selecting the main element in the device tree. To return to the start screen, a single click in the HMC logo area above the device tree is necessary.

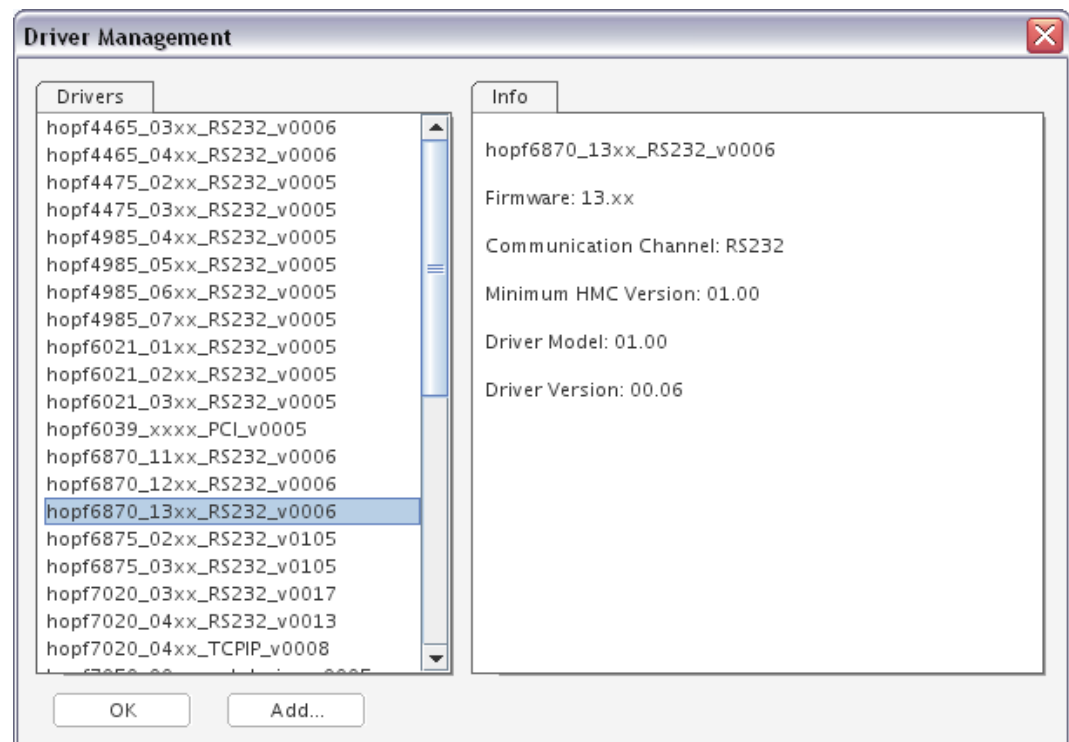
For every integrated device there is a distinct area in the system overview, holding the *device status*, normally green, blue without connection or yellow / red in case of a warning / an alert next to the device type. The devices' order is identical to their order in the device tree.

<div><div></div><div>7020RC</div></div>	HMC Driver: hopf7020_04xx_TCPIP_v0008		
SYNC STATUS	STATUS	CHANNEL	
R	Connected	TCP/IP	
SATELLITES	ADDRESS		
4	192.168.1.230:12000		

The left hand area shows synchronization and connection status and, in case of a device equipped with a GPS receiver, the number of tracked satellites. The right area contains the driver identification the device is logically integrated with in the HMC, as well as an indication of communication channel and connection settings.

Driver Management

The driver management holds a list of all drivers installed in the current installation of the Hopf Management Console. Upon selection of a driver in the list, detailed information concerning the driver is shown to the right in the *info area*, like firmware version, the necessary HMC version, communication channel and the driver's own version.



Adding a Driver

The button *Add* will start a file-open-dialog, wherein a .drv file is to be selected. In case it is a valid and intact HMC driver file that does not need an HMC version greater than the version of this HMC installation, the driver contained within this file will be installed in this HMC installation. The freshly installed driver is available and usable immediately without restarting the HMC.

The Network Configuration Assistant

The Network Configuration Assistant allows management of network capable **hopf** devices via the local network. It is suitable for the initializing or restoring a device's IP address and net mask, or DHCP settings. In addition, host name and passwords may be set for the device, and it may be reset to its factory defaults.

The screenshot shows the 'HMC Network Configuration Assistant' window. It has a 'Device List' tab on the left and a 'Configuration' tab on the right. The 'Device List' tab shows a list of devices: 7271RC00, 727100, and 7050RC. Below the list is a 'Rescan Network' button. The 'Configuration' tab shows fields for Device Type (7271RC00), Host Name (hopf727x), Firmware Version (03.03), Network Configuration Type (Static IP Address), Hardware Address (00:03:C7:01:01:0D), IP Address (192.168.1.210), Serial Number (7271001093), Netmask (255.255.255.0), and Gateway (192.168.1.7). There is an 'Apply' button at the bottom right of the configuration fields. Below the configuration fields are three buttons: 'Set Device Password', 'Reset To Factory Defaults', and 'Set Master Password'. An 'Exit' button is located at the bottom right of the window.

Device List	Configuration
7271RC00	Device Type: 7271RC00
727100	Host Name: hopf727x
7050RC	Firmware Version: 03.03
	Network Configuration Type: Static IP Address
	Hardware Address: 00:03:C7:01:01:0D
	IP Address: 192.168.1.210
	Serial Number: 7271001093
	Netmask: 255.255.255.0
	Gateway: 192.168.1.7

Buttons: Rescan Network, Apply, Set Device Password, Reset To Factory Defaults, Set Master Password, Exit

NTP Analysis

The NTP Analysis dialog allows monitoring of one or more NTP servers and display/analysis of existing NTP statistics (loopstats or peerstats).

NTP Real Time Monitoring

The NTP Real Time Monitor shows current values from running NTP servers. Multiple NTP servers can be monitored at once.

The screenshot shows the NTP Analysis dialog box with two tabs: 'localhost' and 'ntp.at'. The 'ntp.at' tab is active, displaying system and kernel information, and a table of NTP peers.

System Information:

- System Peer: 192.168.1.210
- Leap Indicator: no warning
- Stratum: 2
- Root Delay: 0.000214 s
- Root Dispersion: 0.0115 s
- Jitter: 0.00275 s
- Stability: 1.065 ppm

Kernel Information:

- Maximum Error: Not supported by operating system
- Estimated Error: Not supported by operating system
- Status: Not supported by operating system

Peers Table:

Peer	RefID	Stratum	When [s]	Poll [s]	Reach	Delay [ms]	Offset [ms]	Jitter [ms]	Dispersion [ms]
* 192.168.1.210	hPPS	1	10	16	100%	0.249	4.578	0.0960	0.847
- 192.168.1.7	192.53.103.108	2	16	16	100%	0.106	4.663	0.104	1.306
- 131.130.1.11	131.130.251.17	2	21	64	100%	6.718	-1.880	4.529	5.165
+ 192.53.103.108	PTB	1	58	64	100%	40.689	1.802	0.682	2.915
+ 81.223.14.147	hPPS	1	14	16	100%	0.286	4.531	0.145	0.697
192.168.1.53	INIT	16	281m	16	0%	0.0	0.0	4000.000	0.0
- 212.41.248.75	192.53.103.108	2	12	64	100%	14.783	-14.177	2.593	4.202

Peer: 81.223.14.147 - sydney.rdc.s.at

- Precision: -16 (0.0153 ms)
- Leap: no warning
- Root Distance: 0.0 s
- Root Dispersion: 0.000687 s
- Reference Time: TUE 2007-08-28 12:03:15.057
- Original Time: TUE 2007-08-28 12:03:26.719
- Reception Time: TUE 2007-08-28 12:03:26.715
- Transmission Time: TUE 2007-08-28 12:03:26.714
- Peer Polling Cycle: 16 s
- Host Polling Cycle: 16 s
- Peer Mode: unspec
- Host Mode: client
- Protocol Version: 4
- Flash Code: 0x0000

The screenshot above shows two configured servers (localhost, ntp.at). For every configured NTP server a tab is created, the hostname/IP-Address is shown in the tab heading:



Add / Remove NTP Server

The toolbar at the right side is used to add a new server/tab or remove the currently displayed server:



A mouse click on the asterisk button opens the *Add New NTP Server* dialog:



After entering a host name or IP-Address and confirming with the OK-Button a new Tab is added to the NTP panel.

A mouse click on the x button closes the currently displayed tab.

System Information

System Information	
System Peer:	192.168.1.210
Leap Indicator:	no warning
Stratum:	2
Root Delay:	0.000214 s
Root Dispersion:	0.0124 s
Jitter:	0.00267 s
Stability:	0.930 ppm

The System Information displays system state variables, i.e., state related to the selected server. The meaning of the values is described in the NTP documentation and in the corresponding RFC.

Kernel Information

Kernel Information	
Maximum Error:	0.000724 s
Estimated Error:	0.00000800 s
Status:	pll ppsfreq ppstime ppssignal nano (2107)

The Kernel Information prints kernel phase-lock loop operating parameters. This information is available only if the kernel has been specially modified for a precision timekeeping function (e.g. Linux, Solaris, Tru64).

If this kind of kernel timekeeping is not supported by the underlying operating system of the selected NTP server (e.g. Microsoft Windows), a corresponding message is displayed.

Peers

Peer	RefID	Stratum	When [s]	Poll [s]	Reach	Delay [ms]	Offset [ms]	Jitter [ms]	Dispersion [ms]
✱ 192.168.1.210	hPPS	1	16	16		0.217	3.805	0.0550	1.132
− 192.168.1.7	192.53.103.108	2	10	16		0.103	3.733	0.0700	0.941
− 131.130.1.11	131.130.251.17	2	36	64		11.063	2.099	0.443	5.319
+ 192.53.103.108	PTB	1	21	64		40.783	1.133	0.656	4.940
+ 81.223.14.147	hPPS	1	11	16		0.219	3.821	2.707	0.978
192.168.1.53	INIT	16	5h	16		0.0	0.0	4000.000	0.0
− 212.41.248.75	192.53.103.108	2	36	64		14.364	-11.533	0.561	4.784

Peer:	81.223.14.147 - sydney.rdc.s.at	Peer Polling Cycle:	16 s
Precision:	-16 (0.0153 ms)	Host Polling Cycle:	16 s
Leap:	no warning	Peer Mode:	unspec
Root Distance:	0.0 s	Host Mode:	client
Root Dispersion:	0.000656 s	Protocol Version:	4
Reference Time:	TUE 2007-08-28 12:35:54.057	Flash Code:	0x0000
Original Time:	TUE 2007-08-28 12:36:06.702		
Reception Time:	TUE 2007-08-28 12:36:06.698		
Transmission Time:	TUE 2007-08-28 12:36:06.697		

The peers list shows all configured peers of the NTP server. The values and symbols are the same as the output of `ntpq -pn`. The peer address is always shown as IP-Address, the DNS resolution is performed in the detail view of the selected peer.

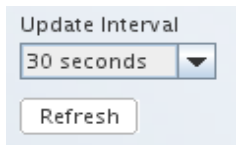
The background color indicates in addition to the symbol the quality of the peer:

dark green – System Peer, PPS Peer
light green – Candidate
yellow – Excess, Selected
red – Outlyer, Reject, Falsetick

Below the Peers List a detail view for the selected peer (grey border) is shown.

The meaning of the values is described in the NTP documentation and in the corresponding RFC.

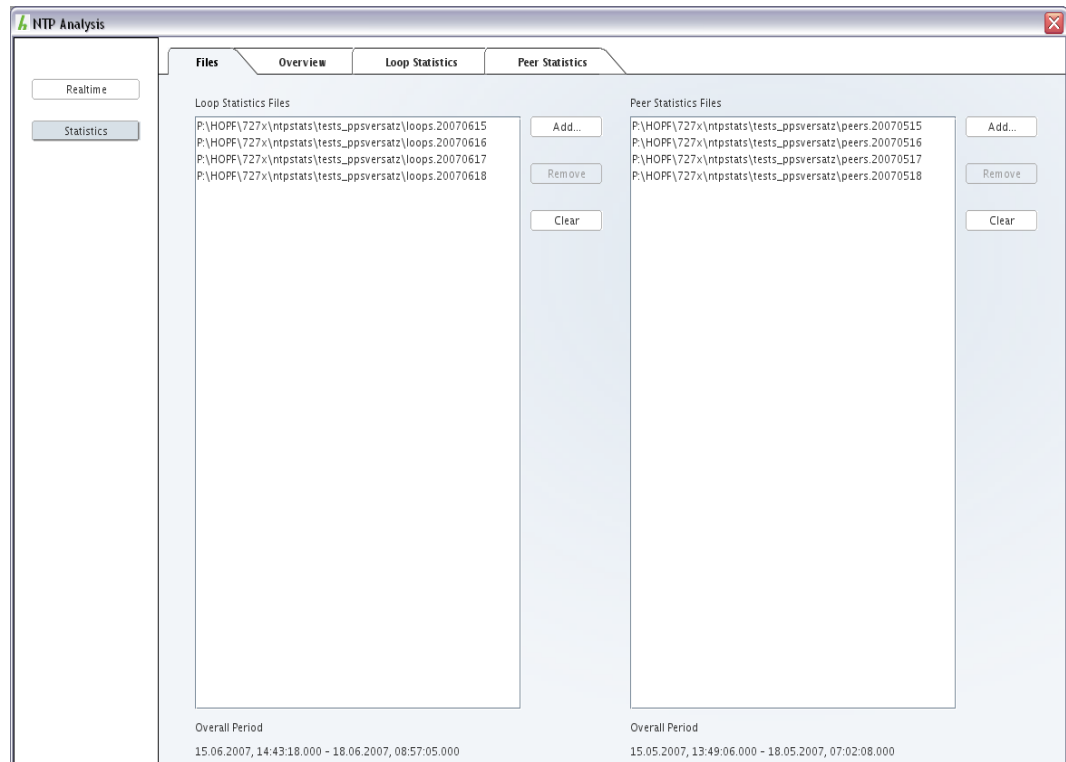
Update Interval

A screenshot of a web interface control for the 'Update Interval'. It features a light blue background. At the top, the text 'Update Interval' is displayed. Below it is a dropdown menu with '30 seconds' selected and a downward-pointing arrow. At the bottom is a button labeled 'Refresh'.

The update interval can be set per server in every tab and has a value of 30 seconds per default. An immediate update can be performed at any time by clicking on the *Refresh* button. If no automatic updates should be performed, *Manual* can be selected in the list.

NTP Statistics Analysis

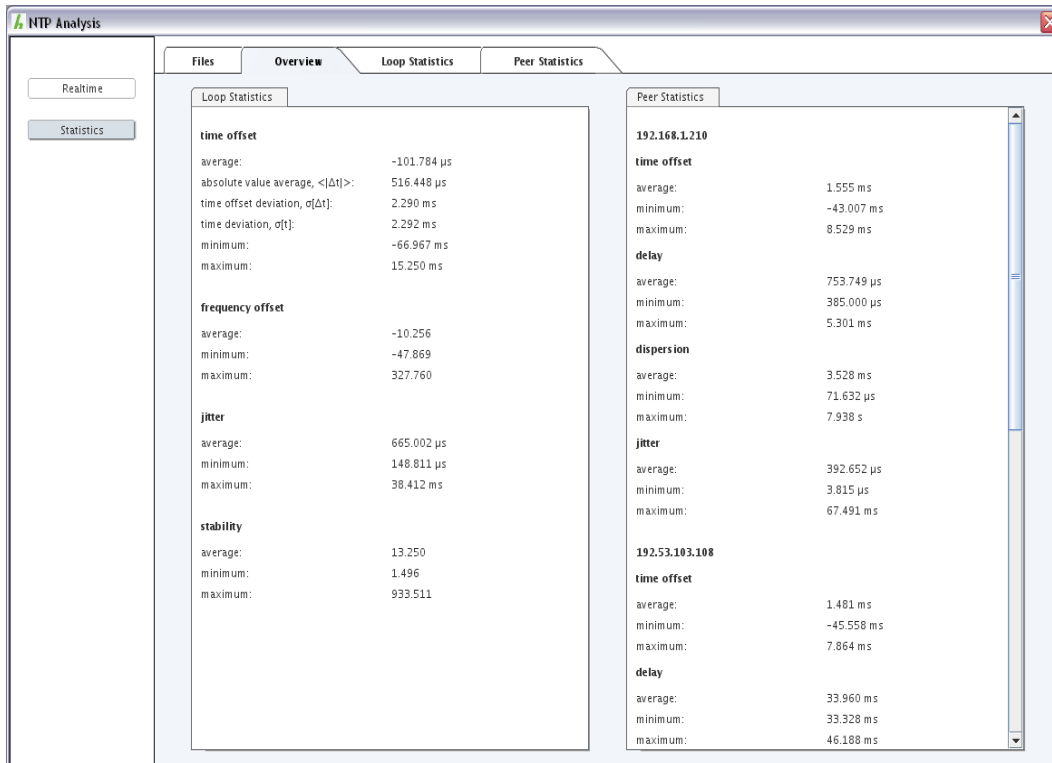
The NTP Statistics Analysis Tool allows comfortably viewing loopstat and peerstat files generated by NTP.



In the *Files* area, one or more loopstat and peerstat files may be added, and removed again.

More than one file of a single category, loopstat or peerstat files, are united to one date, as though they originated in a single, large file.

Overview



The *Overview* area contains, separately for loopstats and peerstats, a summary of all values in the form of average, minimum and maximum. In case of the loopstat time offset, additionally the absolute value average, time offset deviation and time deviation is displayed.

The peers are represented by their IP address, taken from the active peerstat files.

Loop Statistics



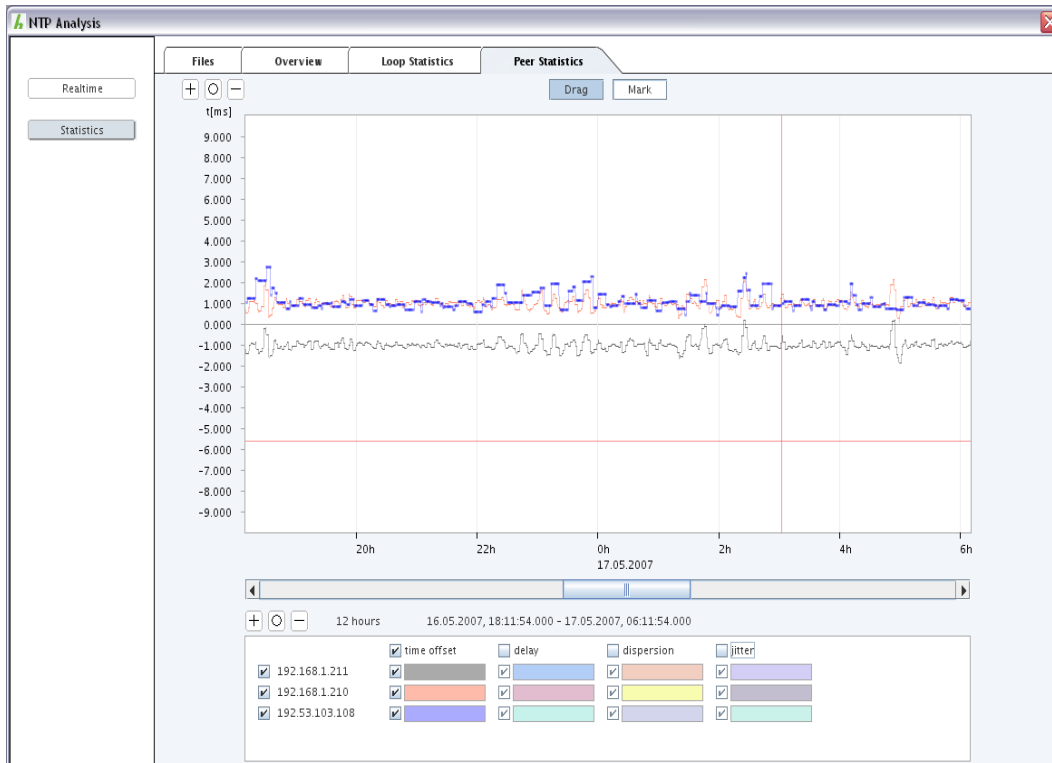
Loopstat files are shown in the *Loop Statistics* area. For the left scale (time, for time offset and jitter), the right scale (ppm for frequency offset and stability), as well as the bottom time scale, the buttons $+$, \otimes and $-$ allow zooming in, resetting the zoom factor, and zooming out.

The two buttons *Drag* and *Mark* switch between the two mouse modes. In dragging mode, the visualization area's content may be moved by holding the left mouse button, thus allowing pixel precision alignment. Clicking the right mouse button will centre the horizontal zero line.

In marking mode, a time range may be selected by holding the left mouse button. On releasing it, zoom and position will be adjusted so that if possible, only the selected range will be displayed. Still, the zoom factor is bound to certain values, so the selected area will often be found in the centre of a slightly large displayed area.

In the bottom area, the four values displayed, namely time offset, frequency offset, jitter and stability may be selected or deselected for display. In addition, for every value the drawing colour may be altered. These colour selections will be stored permanently, as long as the HMC is allowed to terminate regularly.

Peer Statistics

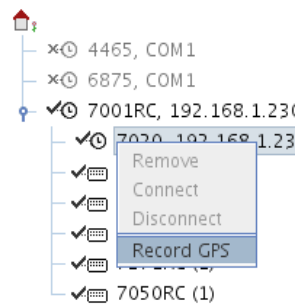


In the *Peer Statistics* area, the active peerstat files' content is displayed. Its handling is very much that of the *Loop Statistics* area, with a few differences:

There only is a single value scale, representing time. The four values time offset, delay, dispersion and jitter are available for every peer in the active peerstat files. In the lower area, they appear once for every peer. There for every combination of value and peer, the colour may be altered, and combinations of both, as well as complete values or peers may be selected or deselected for display. These colour selections will be stored permanently, as long as the HMC is allowed to terminate regularly.

GPS Recording

For all **hopf** devices equipped with a GPS receiver a cyclic recording of GPS quality and time information can be started via context menu:



Recording can be started only for already connected GPS devices, all information is logged into a file and is visualized human readable in a dialog.

The recording dialog

Date / Time	Quality	Satellites Visible	Satellites Received	Sync Status
2007-08-28, 13:36:33		13	5	R
2007-08-28, 13:36:43		13	4	R
2007-08-28, 13:36:53		13	3	R
2007-08-28, 13:37:03		13	3	R
2007-08-28, 13:37:13		13	4	R
2007-08-28, 13:37:23		13	4	R
2007-08-28, 13:37:33		13	4	R
2007-08-28, 13:37:43		13	4	R
2007-08-28, 13:37:53		13	4	R
2007-08-28, 13:38:03		13	3	R
2007-08-28, 13:38:13		13	4	R
2007-08-28, 13:38:23		13	4	R
2007-08-28, 13:38:33		13	4	R
2007-08-28, 13:38:43		13	4	R
2007-08-28, 13:38:53		13	4	R

Polling Interval: 10 seconds
☐ Scroll Lock

Recording starts immediately, after every polling cycle a row is inserted at the end of the list. During recording no clock configuration can be performed.

List of recorded values

The columns have the following meaning:

Date / Time

Current time stamp of the clock in UTC at the time of request.

Quality

Reception quality of all received satellites at the time of request. Every received satellite is displayed as bar, the color indicates the reception quality (red – bad, orange – sufficient, green – good).

Satellites Visible

Number of theoretically visible satellites at the time of request.

Satellites Received

Number of actually received satellites at the time of request. The background color of this column changes if the number differs from the number of the last request in a relevant manner. The following rules are applied regarding the background color:

Number = 0 ... red

Number change from <4 to >=4 ... green

Number change to >0 but <4 ... yellow

Sync Status

Synchronisation status of the clock at the time of request. The background color of this column changes if the status differs from the last status:

R ... green

r ... yellow

all others ... red

Other elements of the GPS reception dialog

The *Polling Interval* can be set between 10 seconds and 5 minutes using the corresponding drop down list. Per default, the list always scrolls to the most recent entry in the list (last entry) – this can be avoided by activating the *Scroll Lock* checkbox.

Recording can be stopped by clicking on the *Stop* button, a click on the *Close* button stops recording and closes the dialog immediately.

View GPS Record

A file containing GPS records created with the HMC can be viewed anytime afterwards by selecting the *View GPS Record* menu item in the menu *Tools*. The user interface and the meaning of the list columns is exactly the same as during a *GPS record* session (see *GPS Recording*).